

Questions? Contact us.

NYPC Patient Portal Support Hotline: (888) 670-9775

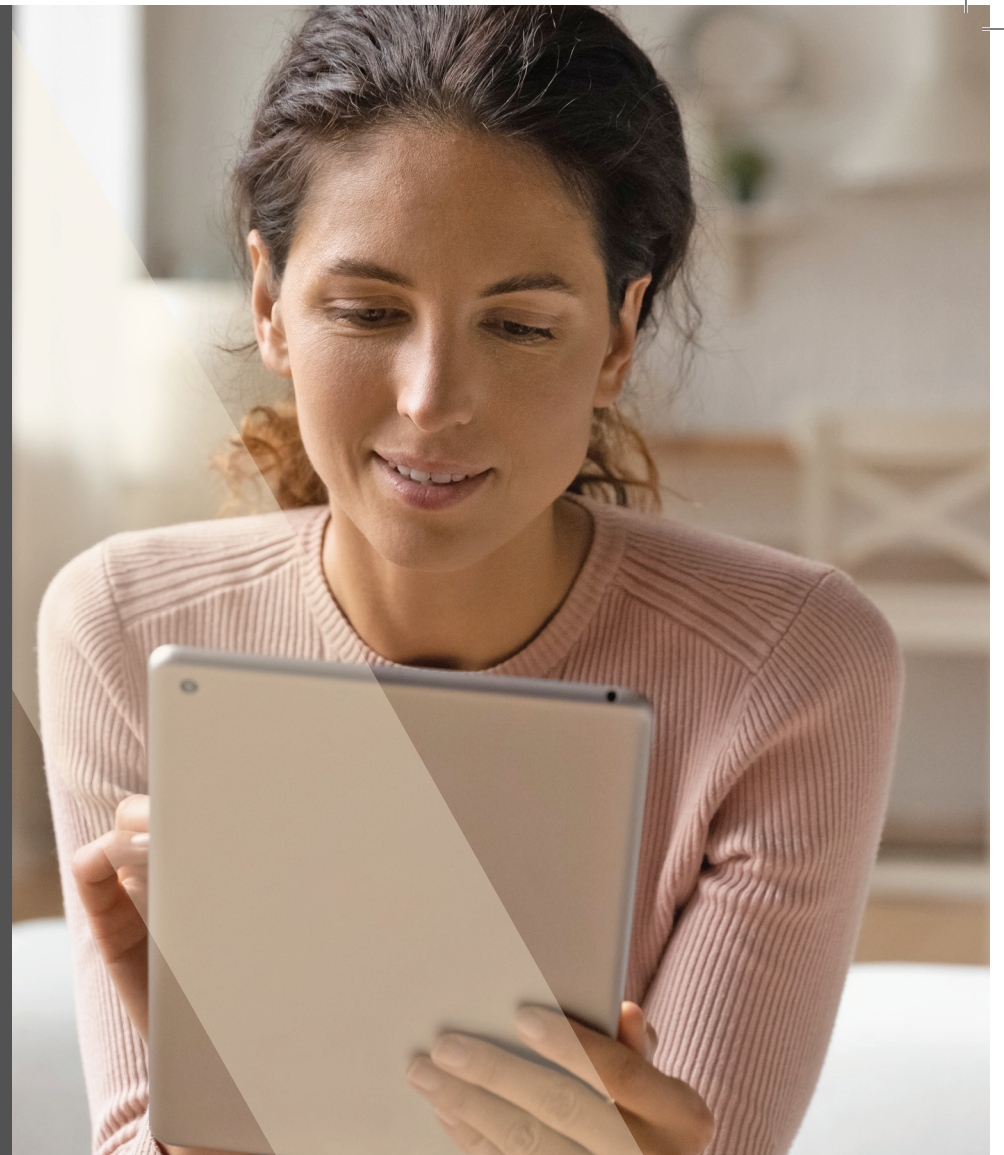
Email: support@followmyhealth.com

Our portal is for non-emergency, routine needs only.
If you need an immediate response to a question,
please call us at 833-NYPROTON (833-697-7686).

NEW YORK
PR*TON CENTER

225 E 126th Street
New York, NY 10035

nyproton.com



Patient Portal

Access your proton therapy
health information

The New York Proton Center (NYPC) has partnered with **FollowMyHealth**[®] to offer a patient portal to help you access health information related to your proton therapy treatment.



The patient portal allows you to view treatment summaries, lab and imaging results, appointment times, and other documents related to your care at the New York Proton Center. Using the portal is easy, free, and secure.

You can access the **FollowMyHealth**[®] portal anywhere, anytime, using a computer or mobile device. The **FollowMyHealth**[®] app is available on the **Apple app store** and **Google Play**.

How to get started

- Make sure we have your correct email address to send you an invitation.
- Click the registration link in the email you receive from noreply@followmyhealth.com.
- Create your portal login using a unique username and password.
- Enter the invitation code provided in the email, then, follow the on-screen prompts to complete setting up your account.

The NYPC patient portal is not connected to any other healthcare facility's portal. However, if you already have a **FollowMyHealth**[®] account with another provider, click the link in the invitation email and select "Sign in and add this connection." This will keep all of your health information in one place.

For parents and guardians of pediatric patients or proxies

You can create a patient portal account on behalf of your child or family member. The invitation to set up the account will be sent to the email address you provided when your child or family member began treatment at NYPC.